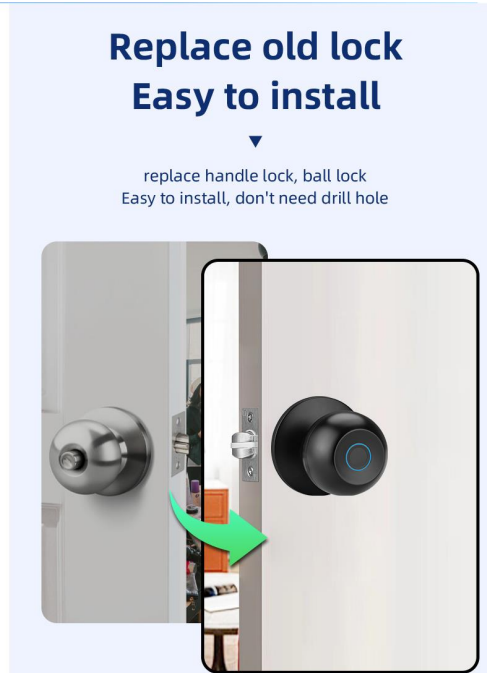


XSDTS-cerradura de puerta inteligente con huella dactilar, dispositivo biométrico de seguridad sin llave, para entrada de casa y apartamento, Tuya



Detalles

Producto químico muy preocupado	Ninguno	Fuente de Alimentación	Batería seca
Nivel de protección	No resistente al agua	Adecuado para embutir	other
Grosor de puerta compatible	35-75cm	Adecuado tipo de puerta	Puerta de acero,Puerta de madera,De latón,Acero inoxidable puerta
Inclúa componentes	List	Prestaciones	Timbre incorporado
Terminar tipo	other	Puerta Funcion	Biométrico,Clave y teclado
Conectividad	bluetooth	Formas para desbloquear	APP,bluetooth,Teclas mecánicas,CARD,contraseña,FINGERPRINT
Material	Aleación de aluminio	Dirección	Dirección Reversible
Número de modelo	k10-2	Nombre de la marca	XSDTS
Modelo XSDTS	k10-2	Origen	CN(Origen)
Certificación	CE,FCC	Plataforma de casa inteligente	tuya

Bluetooth



SMART LOCK

Fingerprint Unlock | Mechanical Key Unlock | App Unlock



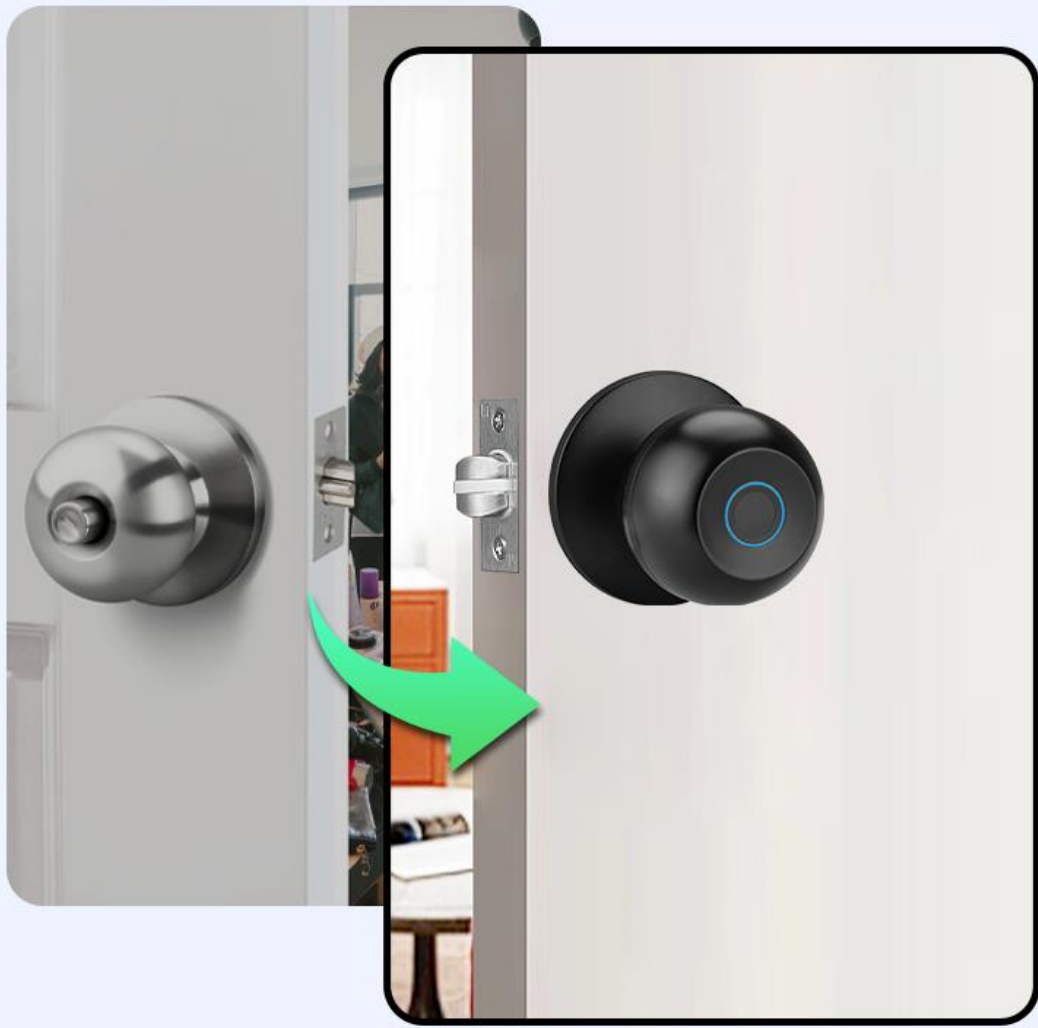
☆ Main Features ☆

- | | |
|---|---|
| 
FINGERPRINT ACCESS | 
PHONE APP UNLOCK |
| 
CONVENIENT MODE SWITCH | 
DIY INSTALLATION |
| 
MECHANICAL KEY UNLOCK | 
HISTORY LOG |

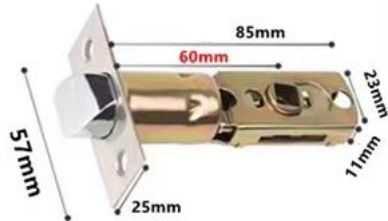
Replace old lock Easy to install



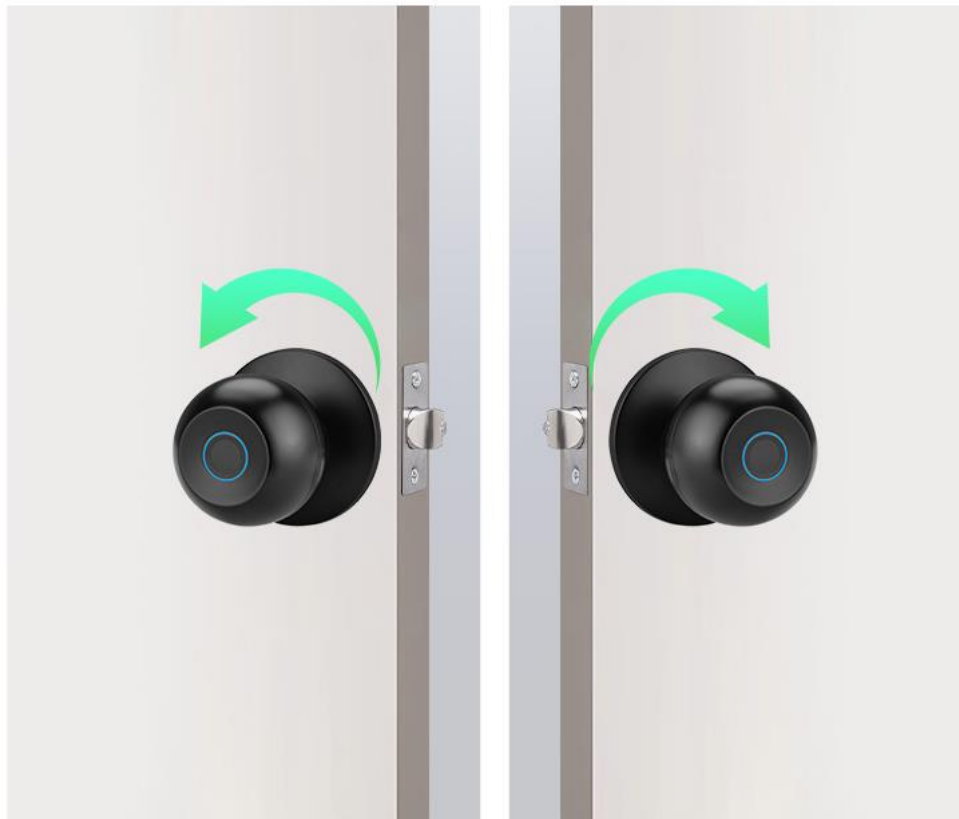
replace handle lock, ball lock
Easy to install, don't need drill hole



Adjustable single latch



Left and Right Universal Lock



Press down handle Touch and Unlock

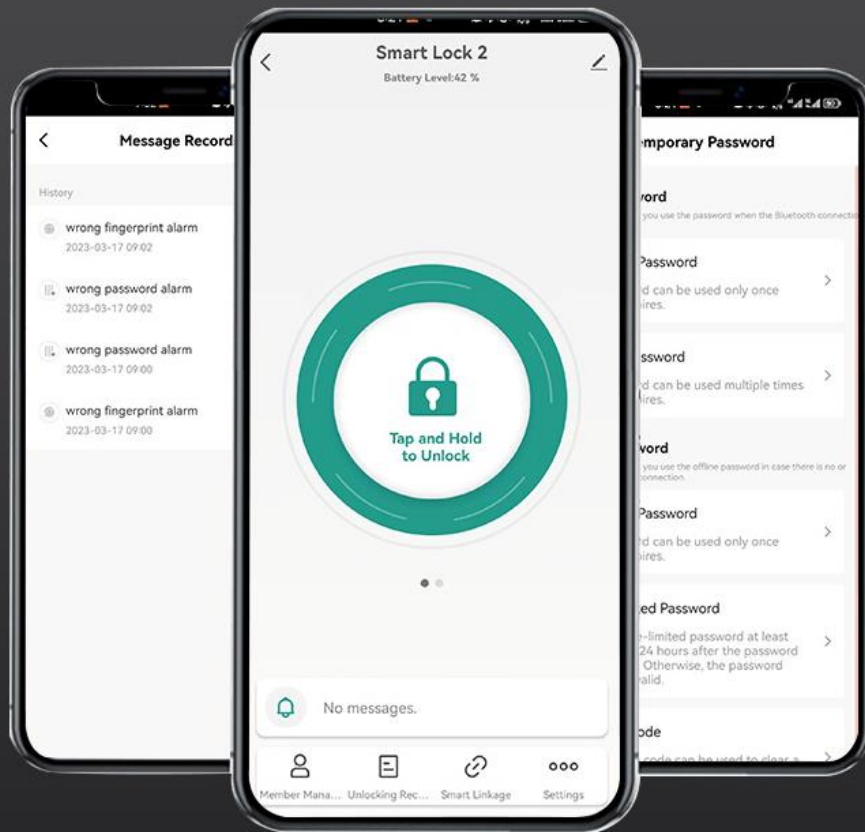


Fingerprint sensor embed in handle
Verify fingerprint unlock the lock





TUYA APP Bluetooth connection



Emergency power supply In case you can't open the lock without power



Support about 6
months with
rechargeable
Li-battery

Install in different place



enjoy smart life



Office

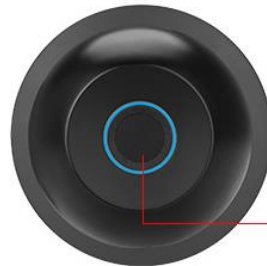


Bedroom



Air B&B

The default is usually open,
continue the use of mechanical ball lock habits



When the knob is in
unlocked state, you can
double-click the fingerprint
area to lock it.



When locking,
you need to turn the button indoors and
use fingerprint recognition to open the door outdoors.

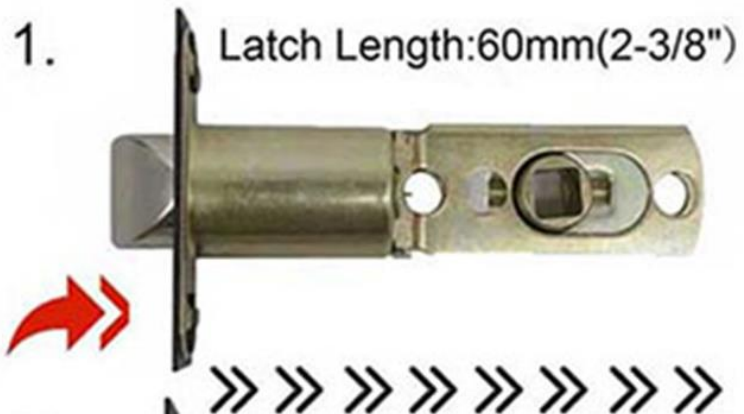


When unlocking,
the door can be opened indoors or outdoors
without any operation.

Screws DIY smart lock



Adjustable 60/70mm



Adjustable Latch

Door lock comes standard with 60-70mm adjustable deadbolt



Installation step diagram



Easy to Install



1. Install the single latch. Put the single latch into the corresponding slot and fix it with screws.



2. Install the Exterior Knob, insert the spindle and the standoffs into the corresponding holes of the single latch.



3. Insert the pin into the hole, separate the rosette from the Interior Knob.



4. Use the screws to secure the interior knob, make sure the UP face upward.

5. Make sure the spindle bar is in the vertical position and rotate the thumb turn to the circular mark. Last insert the Interior Knob into the rosette.



Color



Black



Silver

Product Information



Functions/Performance	Parameters	Remarks
Operating Voltage	3.3-4.2V	Nominal Voltage 3.7V
Alarm Voltage	3.5±0.1V	(1) Low battery detection, local voice prompts (2) Unlock more than 50 times after low voltage alarm
Deep Sleep Power Consumption	≤30uA	(1) Measurement method: Long standby power consumption credit
Static Power Consumption	≤50 uA	
Dynamic Power Consumption	≤200 mA	
Working Temperature	-25°C~ +70°C	Complies with GA374-2019 Standards
Storage Temperature	-40°C~ +85°C	
Humidity Requirements	<93% RH	
ESD Protection	Contact +/- 8kV, air +/- 15kV	
Fingerprint Capacity	20 (the first 3 are administrators and the back 17 are regular users)	
Product Material	Aluminum+stainless steel	
Power Supply	Ternary lithium battery	
Applicable Door Thickness	35-55MM	
Unlock Method	Fingerprint/APP	
Applicable Doors	Domestic and foreign wooden door/office door/ extremely narrow door/ecological door	

Product accessories



Smart Lock x 1



Latch x 1



Strike Plate x 1



Keys x 2

Pin x 1



Screws x 6